

Na Leo O Atlas

Atlas Insurance Agency - Your Navigation Partner



Volume 19, Issue 11
November 2023

Inside this issue

Thanksgiving!	1-2
Client First Program & Alzheimer's Walk!	3
Welcome & PL Referrals!	4
Malama Day & Island Cheer!	5
Toastmasters	6
Atlas Rise & Grind Treat!	7
Risky Business	8-9
Atlas Gives Back!	10

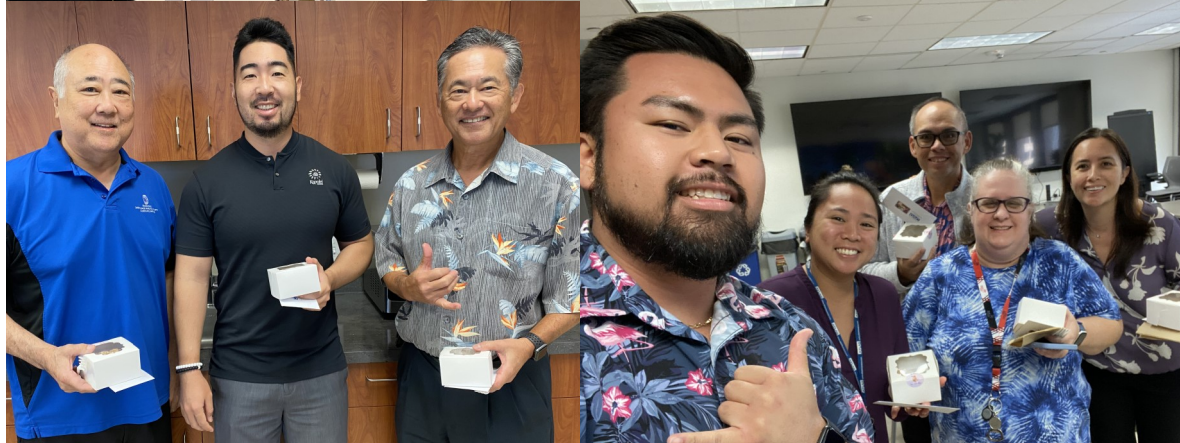
CORE VALUES

**Pono
Lokahi
Alaka'i
Ho'okele
Kakou**

Submit your articles, pictures or suggestions to:
kribilla@atlasinsurance.com

Thanksgiving!

To celebrate Thanksgiving, members of our Atlas 'Ohana received a Zippy's certificate each good for a local platter and a pumpkin crunch cake from Honolulu Rose Cake Shop courtesy of our fantastic Office Activities Committee! This Thanksgiving we're thankful for our team, wonderful clients, and community partners!



Thanksgiving!, Cont.



Client First Program

Customer Satisfaction

AMAZING!

Atlas recently began working with Market Trends Pacific to survey clients on our performance. We started to gather our positive comments and would like to begin sharing it with the company. Here is what our clients are saying about us!

“The fantastic people and service. Sandy F, Janet N, Dylan N, and Dana T are our main contacts. Thank you for the attention and great service!” *Kent M.*

“I love working with Darnell Aquino for her fast responses, she answers all of my questions. I transferred all my home and car insurance to her and saved on my premiums by almost half! I refer all my clients to her as she have excellent customer service and is very responsive.” *Bryson C. & Leah L.*

“Always helpful and always pleasant. They hear my needs and offer excellent options. I have my Homeowners, Hurricane, and Auto policies with Atlas and my son has his Business insurance here too. Our Agent, Fe V., is knowledgeable, kind, and very responsive. I refer clients with confidence and that they will be treated well. *Julie L.*

Walk to End Alzheimer's!

This November, members of our Atlas Ohana, along with friends/family and our family of companies came together to participate in the Walk to End Alzheimer's! Mahalo to Chason, Christen, Jana, Jill, Kevin H., Kristen R., Marisa, Natalie, and Russ P. for coming out to walk!



Welcome, Cynthia!

Please welcome our new Personal Lines Account Manager III, Cynthia Ho. Cynthia come to Atlas after spending more than 20 years at Geico as a customer service representative assisting customers with their auto policy. She holds a BS in Business Administration from USC and has her AINS certification.

Welcome to the Atlas Ohana!



Welcome, Christopher!

Please welcome Christopher Singhavara to the Atlas Ohana! Chris is in our Personal Lines unit as a Sales-Account Manager. He has been working in customer service related positions over the years but just recently was with GEICO as a Customer Service Representative.

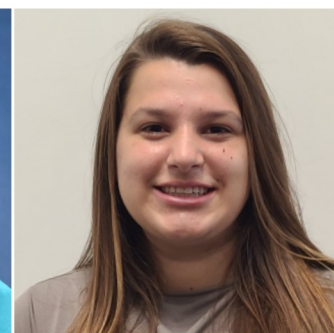
Welcome, Chris!



PL Referrals!

Our Personal Lines Referral Program is still active! Please continue to refer your friends and family (all islands) for a personalized **Insurance Analysis**. Staff receives **\$25** per referral and then **\$25** for every referral bound.

If you would like to participate in this program, please contact Irene Zilisch, at (808) 533-8704 or izilisch@atlasinsurance.com. Here are the staff that helped with the program for the month of November 2023!



Top: Della Nakamoto, 1 referral; Katherine Shofran, 1 referral;
Bottom: Sandy Ferreira, 1 referral; Sharon Hodson, 3 referrals.

Lanakila Meals on Wheels—Malama Day!

Members of our Atlas 'Ohana had the privilege of volunteering with Lanakila Pacific's Meals on Wheels program through our Malama Community Service Program! Special Mahalo to Christen Tominaga, Dana Tokioka, Emily Dirks, Keane Muranaka, Kenna Santos, Kim Soares, Kristen Ribilla, Nathan Nakasone, Russ Park, Sharon Hodson, and Tracie Akai, We came together to deliver meals to support our kupuna in need this Thanksgiving.



Island Holiday Cheer!

Thank you to Island Insurance for spreading holiday cheer by delivering these delicious bentos for everyone here at Atlas!



Celebrating Success at Atlas Olelo Hui: A Toastmasters Triumph!

By: Ken Fujiwara

In the spirit of fostering personal and professional growth, we are thrilled to share the highlights from the latest gathering of our corporate Toastmasters club, Atlas Olelo Hui.

Guiding us through an engaging session, Zhi Hao Liu took the reins as the Toastmaster of the Day, setting the tone for an unforgettable meeting with the theme "Winter in Paradise." As an intriguing twist, speakers were prompted to envision the first thing they would do if snowflakes graced Hawaii's tropical landscapes.

Among the standout presentations, Jana Mukogawa delivered a captivating speech titled "Toastmaster Skills, Roles & Practices That Are Useful in Court." Her insights into leveraging Toastmaster principles in legal settings left a lasting impression on the audience. Adding to the excitement, Jessica Pippin embarked on her Toastmasters journey with flair, presenting her inaugural speech, the "Icebreaker Speech" titled "Can Procrastination Be Good For You." Her thought-provoking exploration of the topic showcased the diverse talents within our Toastmasters community.

In recognition of outstanding performance, we extend heartfelt congratulations to Jana Mukogawa, who clinched the Best Speaker Award. Well done, Jana! A special shoutout goes to Sharilyn Tanaka, the longest-serving member of Atlas Olelo Hui, who showcased her public speaking skills giving a heartfelt invocation at the Atlas Holiday Party. Sharilyn's dedication to the club is truly appreciated.



Looking ahead, mark your calendars for our upcoming meeting on December 12th. If you're not already a member, we warmly invite you to join us as a guest. Atlas Olelo Hui is more than a Toastmasters club; it's a supportive community where we grow, learn, and celebrate success together. Here's to the power of effective communication and continuous improvement!

Atlas Rise & Grind Treat— W&M Burger!

Every month we feature goodies from a local business in our Atlas Rise & Grind Cafe and November's treat was courtesy of W&M Bar-B-Q Burgers in Kaimuki! Our Honolulu office enjoyed mouthwatering royal hamburgers which were a hit with the Team!



Risky Business Corner

Safety During the Holidays

By: Chris Wong



The holiday season is referred to as “the most wonderful time of the year” for many reasons. From spending time with loved ones, decorating homes and Christmas trees, to shopping for the perfect gift, many of us look forward to these times of celebration and enjoyment. However, it is also important that we do not let our guards down when it comes to our and other people’s safety. The malls will be crowded with more shoppers than it will be all year, the roads will have more cars going back and forth between grandma’s house to uncle’s house, and many homeowners will be lighting up their homes with decorations and using every single outlet they can find. This is your reminder to be safe as you deck the halls during the holiday season!

The holiday season continue to be among the most dangerous times for drivers in the United States. According to the National Safety Council (NSC), fatigue, distractions, impairment, and general neglect while driving significantly spikes traffic accidents and fatalities during the holidays. NSC projected that 507 deaths will occur between Wednesday, November 22nd and Sunday, November 26th. This is the day before Thanksgiving leading up until the end of the weekend. Staying alert at all times while driving and planning ahead if driving services are needed will play a major role in keeping us safe on the road during the holidays.

Food brings people together, and this can’t be more true when it comes to the holidays. It is no surprise that Thanksgiving Day experiences the peak of kitchen fires with an average of almost 1,600 fires on the day as reported by the U.S. Consumer Product Safety Commission (CPSC). Remember to never leave food being cooked unattended and to ensure you are at a suitable distance from your home or other flammable material when frying turkeys.



Risky Business Corner

Safety During the Holidays, Cont.

By: Chris Wong



Food brings people together, and this can't be more true when it comes to the holidays. It is no surprise that Thanksgiving Day experiences the peak of kitchen fires with an average of almost 1,600 fires on the day as reported by the U.S. Consumer Product Safety Commission (CPSC). Remember to never leave food being cooked unattended and to ensure you are at a suitable distance from your home or other flammable material when frying turkeys.

Toy-related deaths and injuries were highlighted by the commission as the latest report found 11 deaths and approximately 145,000 emergency department-treated injuries last year for children 12 and younger. When gifting toys to your children and young ones, always be aware of the age guidance and other safety information that is provided by the manufacturer. Remind them that helmets and other safety gear should also be used at all times while riding bicycles, scooters, and other riding toys.

Lastly, there's nothing more enjoyable than seeing all the holiday lights and decorations across homes and buildings during the holidays. But many don't know the dangers that it takes to set-up and even maintain a spectacular scene. Decorations such as Christmas trees, lighting, and candles, increase the risk of home fires. Christmas, New Year's Eve, and New Year's Day are the top three days for home candle fires according to the National Fire Protection Association (NFPA). Be aware of candles that you light and ensure they are put out when done. Also double-check the condition of the lighting used for decoration to ensure wires aren't frayed and bulbs aren't cracked. And try not to overload your electrical outlets as this is very susceptible to starting fires.



As we approach Christmas and the New Year, let's do our part in having a wonderful and safe holiday season with our friends and families. Safety is the best present!

Atlas Gives Back!



F O U N D A T I O N

The Atlas Insurance Agency Foundation continuously gives back throughout the year with corporate sponsorships or straight donations to organizations/ non-profits. Please don't forget that Tradewind Group will match your personal donation to a 501C3 \$1.00 for \$1.00, up to \$500 per employee. Contact Dana Tokioka at dtokioka@atlasinsurance.com for more details.

\$10,000



\$2,500



Hale Makua



\$5,000



\$2,500

PALAMA SETTLEMENT



SINCE 1896

\$1,000

